



VESSEL SPECIFICATION SHEET

N-SEA FOCUS

35M HYBRID SURVEY / ROV SUPPORT VESSEL



- + DP1
- + Hybrid - low fuel consumption
- + HiPap 501
- + Green Passport Lloyd's Register
- + High spec survey equipment permanently installed

CLASSIFICATION / FLAG / REGISTRATION

Vessel Name	N-Sea Focus
Owner	Geo Tender IV B.V.
Flag	Dutch
Call sign	PCOS
IMO	9628855
Port of registry	Eemshaven
Built	2012
Builder	De Haas Maassluis, The Netherlands
Range	1200 NM@ hybrid mode, 650 NM@ operational speed (13 knots), 10-14 days full operation
Classification	Lloyds Register+ 100 A1, SSC, G3 Workboat, MONO, UMS, [+] LMC, DP(AM), EP, Green Passport, 200nm Limit

GENERAL DIMENSIONS

Length overall	34.50 m
Length between perpendiculars	32.59 m
Length waterline	32.84 m
Air draft (mast down)	13.00 m
Breadth moulded	7.81 m
Breadth overall	8.33 m
Depth	4.23 m
Draft	2.20 m
Gross Tonnage	235 tons
Light ship weight	165 tons

ACCOMMODATION

Single cabins	2
Double cabins	8
Total accommodation	18 persons
Comfort cabins	High Norwegian standards, WIFI, each cabin provided with toilet and shower.
HVAC system	The air conditioning system is designed for both tropical and arctic conditions. The system has two separated units for the wheelhouse, survey room, and the accommodation below deck to avoid interference in comfort of the crew during 24 hours duty. On the wheelhouse/survey room deck a drop air conditioning system ensures a comfortable work condition without chill flow.
Crew facilities	Lounge, mess room, galley (HACCP compliant), changing room, internet, TV, library, game console

MULTIFUNCTIONAL WORK DECK

Deckspace	40 m ²
A-frame	SWL 3500 kg, hoisting capacity hydraulic winch 3200 kg, outreach approximately 3 m back- and forward of rotation point.
Deckcrane	Knuckle boom marine crane (Heila HLMR 16-3S), 10.97 m reach from crane axis, max. load @ max. reach is 1200 kg @ 10.97 m, load sensing for efficient power request, remote control for easy operation.
Moonpool	600mm
Hatch engine	Clear opening 4.50 x 1.50 m, provides access to the workshop down below in the engine room
Provided power	2 x 400 V (3PH) - 63 A, 2 x 400 V (3PH) - 32 A and 2x230V, 16A
Other facilities	Electric deck heating, grid of container fittings, removable railing, fresh water tap, 25 mm rubber deck coverage, easy cable entry from workdeck to the survey room and technical room, frame for installation of winches.
Dynamic position	Alphatron / NAVIS 400 - DP Class 1 (AM) DP. Operations can be executed from both the survey room and the wheelhouse.

SPEED / CONSUMPTIONS

Speed	max. 14 knots (C-rating)
Speed Hybrid	max. 9 knots
Transit speed	13 knots / 230 l/h
Survey speed (Hybrid)	8 knots / 50 l/h

CAPACITIES

Fuel	17.50 m ³
Fresh water	2.60 m ³
Grey water	2 X 2.60 m ³
Black water	1 X 2.60 m ³
Fresh water generator	Aquamar AQE-4D, capacity 3200 l / 24 h

SURVEY EQUIPMENT

Multibeam	Kongsberg EM2040 MKII (moonpool), single RX 0.7 degree, dual swath, high frequency mode
Singlebeam	Kongsberg EA 400 (hull mounted), 38/200 kHz
USBL positioning	Kongsberg HIPAP 501, incl. Cymbal mode, cNode transponders + chargers
Gyro/Motion reference	IXSEA Hydrins III, Apogee E Navsight
Survey Positioning	Trimble SPS852, C-nav X1MAX
Sound Velocity Probe	Valeport SWIFT SVP 2x
Sound Velocity Sensor	Valeport mini SVS
Current Profiler	Nortek Signature VM500 ADCP
Others	Fast mobilisation of additional equipment provided by 19 inch rack space, N ports, cable glands, antenna mounts and predefined capability modes
KVM Systems	G&D KVM matrix switch ControlCenter

NAVIGATION

■ Sea Radar X-band (JRC)
■ River Radar (JRC)
■ ECDIS (Alphachart T ECDIS)
■ Speedlog
■ Echosounder
■ DGPS
■ AIS
■ NAVTEX
■ CCTV system on aft deck, top deck & engine room
■ Integrated control and alarm system (BIMAC)

COMMUNICATION / CONNECTIVITY

■ VSAT - Intellian v100NX KU 25W
■ Inmarsat Fleet Broadband
■ UMTS
■ WIFI
■ 12 / 24 / 220 / 400 V connections

MACHINERY / PROPULSION

Main diesel engines	2x Caterpillar C18 ACERT 651 KW@ 2200 rpm (6 Cil. In-line)
Gearboxes / DieselElectric propulsion	Reintjes 344 RHS (Hybrid Drive)
Bow Thruster	2x Voith Inline Thruster VIT 380-50
Generators	2x John Deere Genset 209 KW @ 1500 rpm

ENTERTAINMENT/ LEISURE

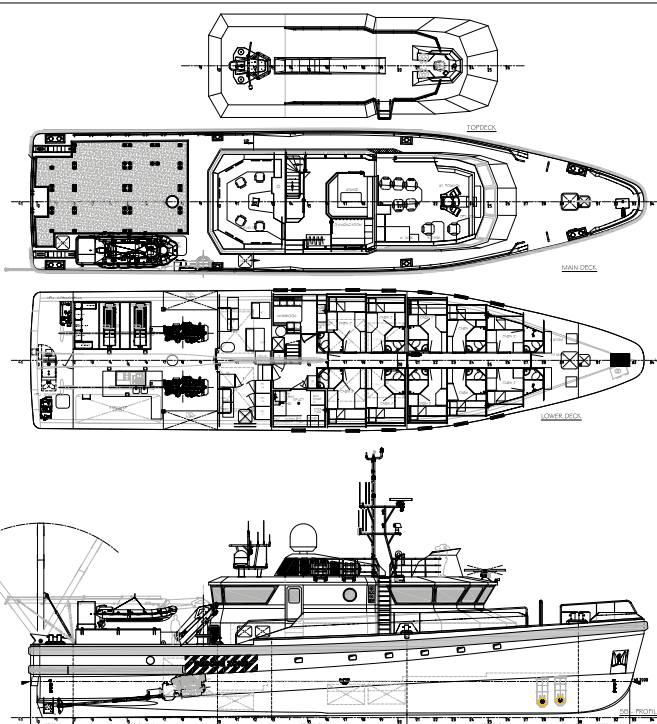
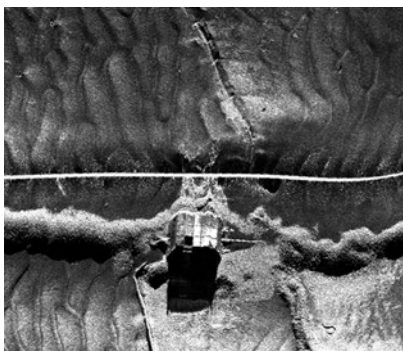
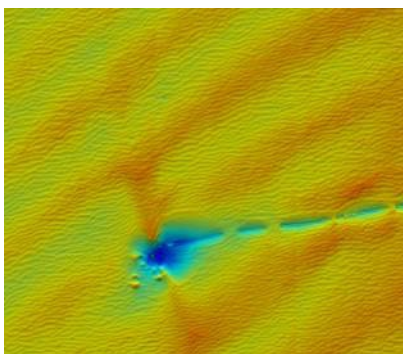
Broadband connections are provided for personal use throughout the vessel. LAN and WLAN connection is available in each cabin. The mess room and lounge are equipped with a 37" HD LED television connected to SAT TV system, additionally, the lounge provides an audioset and game console.

ADDITIONAL FACILITIES

Interactive LED HD screens are provided in the wheelhouse and survey room for presentation purposes.

SUSTAINABLE FEATURES

- Hoisting eyes on the vessel make it possible to place the vessel on board of a larger vessel to ship it all over the world.
- Hybrid drive so less fuel consumption and less NOx emission.
- Green Passport and Environment Protection (EP) class notification.
- Seakeeper Anti-Roll Gyro System
- Very low noise level



**WE LISTEN
THEN DELIVER**

N-Sea
Wilgenbos 2 (4th floor)
3311 JX Dordrecht

The Netherlands
E info@n-sea.com
E sales@n-sea.com

T +31 (0)111 456 000
www.n-sea.com