



PROJECT SHEET

N-Sea is an integrated total subsea solutions provider in Survey, IRM & Construction, Subsea Cable Repair & Installation, and UXO ID & Disposal.

We deliver total solutions for subsea infrastructures and assets that meet the needs of our clients and the international oil & gas, and renewable industries, considering a safe environment.

We want to create a sustainable business and increase our profitability through solid project management and full client awareness.

To realise this ambition we develop our organisation to the level of best in class being fully synchronised with our ambition and strategy by contributing to the following key success factors constantly:

- Qualified and engaged people
- Long term client relationships
- Strategic partnerships
- Innovative solutions
- Safety and quality 100%
- Visible presence
- Full control over marine assets

Safety, Health, Environment, Quality (SHEQ)

Our SHEQ Policy aims to ensure alignment to the N-Sea mission, vision and strategy, where 'first time right' means ensuring that harm is not inflicted upon its employees, contractors, service providers, or the environment, N-Sea's assets, as well as members of the public affected by its operations, infrastructure and all operational activities within our scope of work.

N-Sea management and all employees are committed to create a physical, social and psychological safe working environment. We ensure the well-being and protection

of human life, environmental duty of care, protection of assets and customer satisfaction.

N-Sea has integrated safety, security, health, environment and quality requirements into all our activities so that decisions made ensure the consideration of economic development, environmental quality, and social equity to continually improve performance and achieve stakeholder requirements.

"We genuinely care. We avoid harm to people and the environment while providing quality services to our customers."

To achieve our mission statement, we have established 4 core values that guides all employees in building their personal roles and developing our organisational culture.

We are driven to perform in accordance with the industry best practices and meet the requirements of ISO 9001 (Quality Management), ISO 14001 (Environmental Management) and ISO 45001 (Occupational Health & Safety Management) for which we are certified.

A safe working environment is vitally important to N-Sea. The safety awareness and actions of our employees play a crucial role in ensuring occupational, social and psychological safety within our organisational culture. This is reflected by our Level 3 Safety Culture Ladder certification.

Export cable project in Irish Sea

Export cable repair

Client	OFTO
Location	Irish Sea
Period	May 2022 - July 2022
Assets	CLB NP459 including support vessels
Extra	2x CTV, 1 x ROV, 120 project team members

Project description

The 20 km long offshore export cable connects one of two offshore substation situated 15 km off the North Coast of Wales to an onshore substation. The export cable transports power of 160 wind turbines which a total capacity of 576 MW. N-Sea Offshore BV was awarded the contract to perform a cable repair on the export cable in which over 7 kilometre of cable needed to be replaced. The replacement length was installed in very challenging conditions with water depths ranging from 5m – 21m LAT.

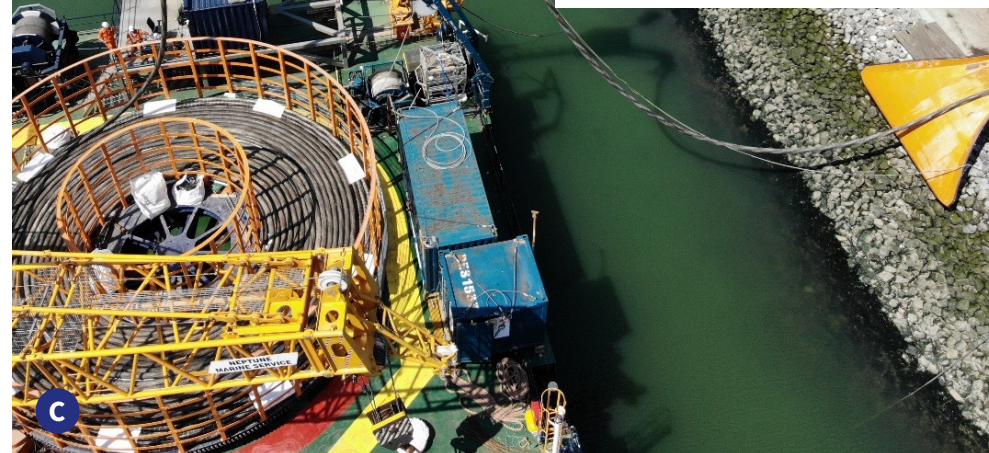
Scope of work

Principle Contractor and Designer responsibilities (CDM). Engineering, analysis, task specific training and development of method statements to support mobilisation, and offshore operations. Full HV Management Including taking over the System during the repair), preparation of the export cable for cable repair operations, testing, jointing, and commissioning. (De-)Mobilisation of a CRB with cable extraction and lay equipment as well as the required jointing equipment. Loading of 10 km free issued cable and universal joints for the execution of the works. Subsea preparations of cable route consisting of installation of cable crossings protections and deburial of the cable route by means of CFE and subsea cutting.

Marine Co-Ordination of all offshore activities associated with the repair removal of the faulted section of cable including existing subsea joints (x4) and subsequently installation of the replacement of section including 2 universal joints. Burial of the laid cable by means of CFE to a minimum of 1.5m depth. Testing of the repaired cable upon completion of the works ready for hand back to client. Offloading of both remaining replacement cable as well as scrapping of cable ready for processing.

Export cable project in Irish Sea

Export cable repair



A Universal joint ready for over boarding **B** Mattresses ready for installation on cable crossing **C** Cable offloading at port of demobilisation **D** Over boarding Omega joint over boarding

**WE LISTEN
THEN DELIVER**

N-Sea Wilgenbos 2 (4th floor), 3311 JX Dordrecht, The Netherlands **E** info@n-sea.com **E** sales@n-sea.com **T** +31 (0)111 456 000 **www.n-sea.com**