

N-Sea is an integrated subsea service provider. We offer a wide range of Survey and IMR services to civil contracting communities and the energy sector, focusing on the international oil and gas and renewable industry.

We meet our clients' needs. How? By providing effective and cost-efficient solutions for subsea assets and infrastructure, considering a safe environment.

N-Sea delivers subsea: from installation to decommissioning, from inspection through to maintenance management, we help assess the state of subsea assets and provide the necessary service throughout their entire lifecycle.

WE LISTEN THEN DELIVER

“EXECUTING OUR STRATEGY IN AN IRREVERSIBLE WAY”

We have the ambition to be the go-to total subsea solutions provider. We want to create a sustainable business, be less vulnerable and increase our profitability.

To realize this ambition, we have a clear vision and strategy relating our solutions, markets, geographies, and organization. To achieve these goals, we develop our organisation to the level of best in class being fully synchronised with our ambition and strategy by contributing to the following key success factors constantly:

- Qualified and engaged people
- Long term client relationships
- Strategic partnerships
- Innovative solutions
- Safety and quality 100%
- Visible presence

N-Sea

Wilgenbos 2 (4th floor)
3311 JX Dordrecht
The Netherlands

E info@n-sea.com

E sales@n-sea.com

T +31 (0)111 456 000

n-sea.com

GAS NETWORKS IRELAND

OFFSHORE AND NEARSHORE SURVEY & INSPECTION 2021

PROJECT DESCRIPTION

The Pipeline system between Scotland, Ireland and Isle of Man requires to be surveyed and inspected in 2021 as part of the regular maintenance of the system. N-Sea has been executing similar surveys and inspections in the past on the same pipeline and was again contracted to execute these works.

The project execution began in July 2021 by mobilizing a nearshore vessel whereby the pipeline at the landfalls have been surveyed by using multibeam and side scan sonar. In addition, CP measurements were taken.

The N-Sea operated vessel Pathfinder was mobilized in the summer of 2021. The vessel was used to perform towed ROTV and WROV surveys by using visual, multibeam and side scan sonar. In addition to the surveys, CP measurements were taken and seabed intervention by dredging, and gravel installation was done from the same vessel.

After a short interval the Pathfinder returned to the Irish Sea and mobilized as a dive support vessel to perform maintenance on the Subsea Tee by divers. During this campaign the heavy roof panel was removed from the subsea dome and divers performed various maintenance activities on the valve system according to the project procedure.

FEATURES

Client	Gas Networks Ireland
Location	Irish Sea
Period	July – October 2021
Assets	OSV Pathfinder, Titan Discovery
Extra	ROTV equipped with side scan, WROV equipped with pipeline survey systems (camera, multibeam), mass flow excavator, Dive system





SEA

PROJECT SHEET

GAS NETWORKS IRELAND

OFFSHORE AND NEARSHORE SURVEY & INSPECTION 2021

SHEQ

Aligned SHEQ goals are fundamental to the way in which N-Sea operates. We encourage and train our people across our worksites, providing them with the support and assistance required to operate safely.

“WE GENUINELY CARE. OUR TARGET IS NO HARM TO PERSONNEL AND NO IMPACT TO THE ENVIRONMENT”

Our safety initiatives are a key driver to ensuring we achieve the highest safety standards:

- by applying visible leadership, workforce engagement and effective intervention
- with a minimum impact on production
- considering environmental factors
- without compromising quality

N-Sea's objective is to provide an environment where all those involved in/or are affected by the activities we perform, are safe and empowered to stop the job if they feel it is unsafe.

We are driven to perform in accordance with the industry best practices and meet the requirements of ISO 9001 (Quality Management), ISO 14001 (Environmental Management) and ISO 45001 (Occupational Health & Safety).

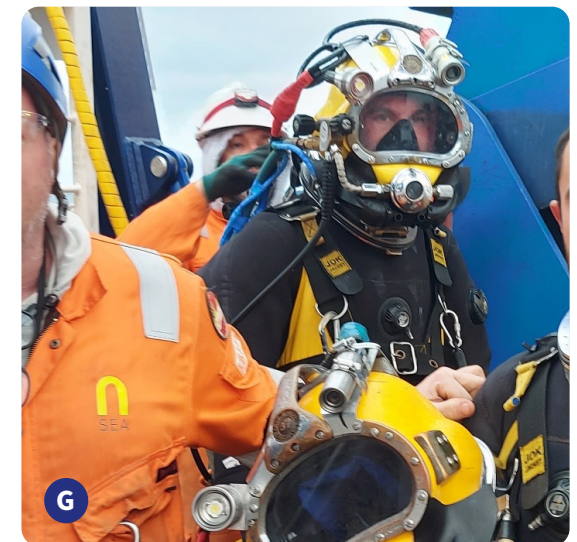
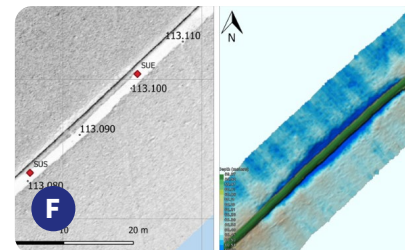
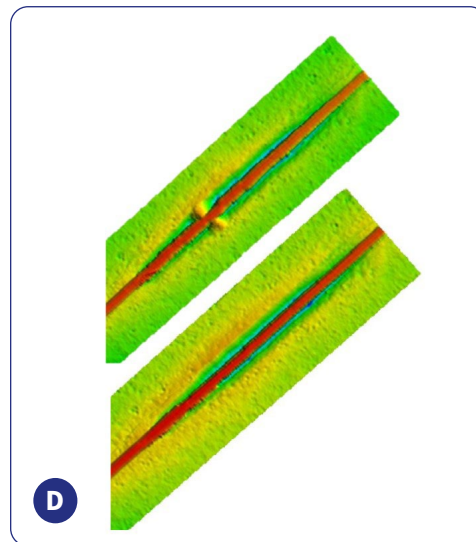
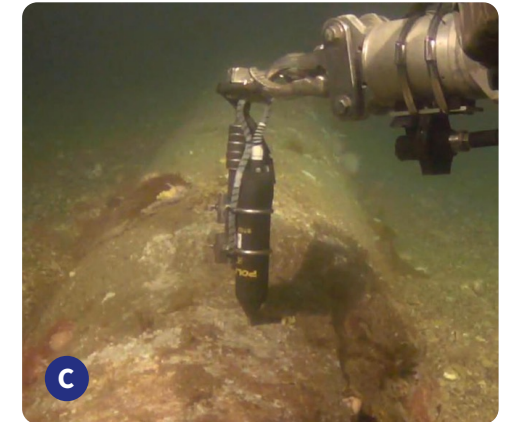
We strengthen the above through our distinctive four-pillar approach:

SAFE Safety excellence is at the heart of everything we do

TOGETHER We work and operate as one group, teamwork is our strength

SOUND We listen then deliver

SWIFT We understand the priorities of our Clients



A Dive LARS installed inside WROV LARS to allow for fast mobilization **B** Pathfinder deploying WROV during pipeline inspection **C** Subsea CP measurement by WROV **D** Pipeline in span and span supported with rock bags **E** ROTV with SSS and MBES **F** SSS and MBES image of pipeline in freespan **G** Divers preparing on deck