



PROJECT SHEET

N-Sea is an integrated total subsea solutions provider in Survey, UXO ID & Disposal, IRM & Construction, and Subsea Cable Repair & Installation.

We deliver total solutions for subsea infrastructures and assets that meet the needs of our clients and the international oil & gas, and renewable industries, considering a safe environment.

We want to create a sustainable business and increase our profitability through solid project management and full client awareness.

To realise this ambition we develop our organisation to the level of best in class being fully synchronised with our ambition and strategy by contributing to the following key success factors constantly:

- Qualified and engaged people
- Long term client relationships
- Strategic partnerships
- Innovative solutions
- Safety and quality 100%
- Visible presence
- Full control over marine assets

Environment, Health, Quality, Safety (EHQS)

Our EHQS policy aims to ensure alignment to the N-Sea mission, vision and strategy, where ‘first time right’ means ensuring that harm is not inflicted upon its employees, contractors, service providers, or the environment, N-Sea’s assets, as well as members of the public affected by its operations, infrastructure and all operational activities within our scope of work.

N-Sea management and all employees are committed to create a physical, social and psychological safe working environment. We ensure the well-being and protection

of human life, environmental duty of care, protection of assets and customer satisfaction.

N-Sea has integrated safety, security, health, environment and quality requirements into all our activities so that decisions made ensure the consideration of economic development, environmental quality, and social equity to continually improve performance and achieve stakeholder requirements.

“We genuinely care. We avoid harm to people and the environment while providing quality services to our customers.”

To achieve our mission statement, we have established 4 core values that guides all employees in building their personal roles and developing our organisational culture.

We are driven to perform in accordance with the industry best practices and meet the requirements of ISO 9001 (Quality Management), ISO 14001 (Environmental Management) and ISO 45001 (Occupational Health & Safety Management) for which we are certified.

A safe working environment is vitally important to N-Sea. The safety awareness and actions of our employees play a crucial role in ensuring occupational, social and psychological safety within our organisational culture. This is reflected by our Level 3 Safety Culture Ladder certification.

Marine site investigation Norfolk

| | |
|-----------------|---|
| Client | RWE |
| Location | North Sea, United Kingdom |
| Period | March 2023 - November 2024 |
| Assets | N-Sea Pathfinder, 4-Winds, EDT Protea, Braveheart Spirit, Geo Ranger, and Geo Focus |
| Extra | Magsense, 2DUHRS, WROV, CPT, and VC, SBP, MBES |

Project description

RWE awarded a contract to N-Sea for the geophysical and geotechnical surveys as part of Norfolk Offshore Wind Zone, comprising Norfolk Boreas, Vanguard East, Vanguard West windfarms.

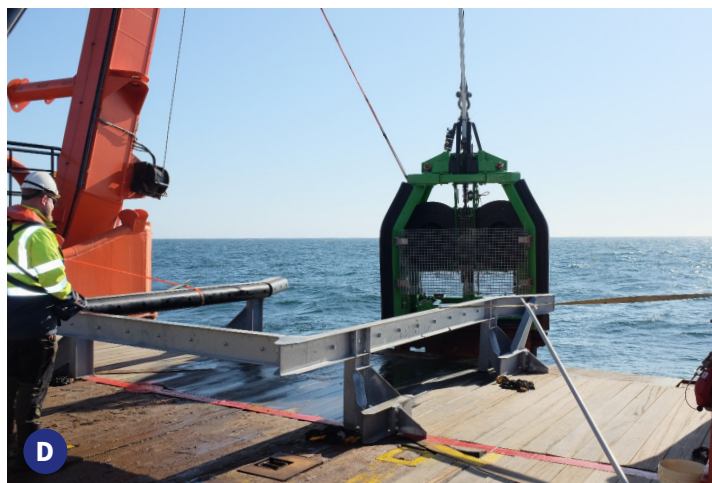
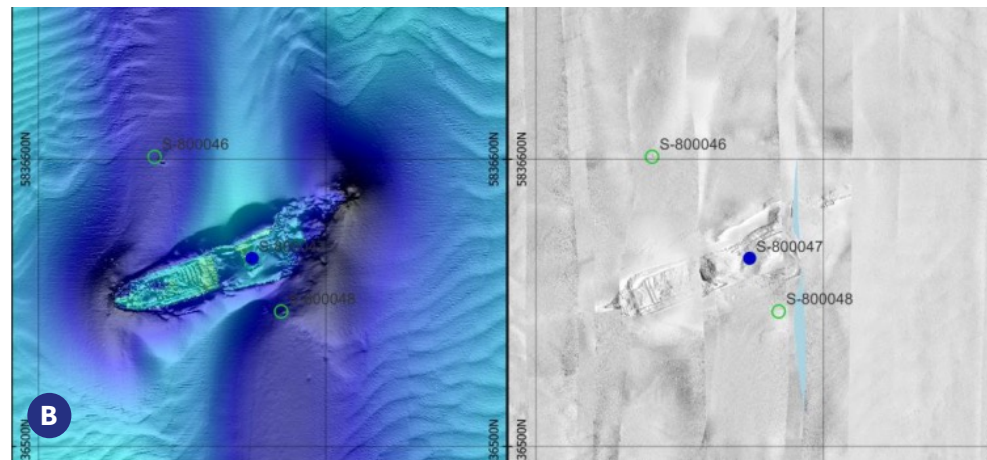
The Norfolk Zone wind farms are located approximately 40NM northeast of Great Yarmouth on the United Kingdom continental shelf, North Sea. The total capacity of the Norfolk Zone is planned at 4.2 GW which will make it one of the largest windfarm schemes in the world.

Scope of work

The scope of work consisted out of the following phases:

- 20.854 km of UXO survey including multibeam and sub bottom profiler along the export cable route and inter array cable corridors.
- 2.737 km of 2DUHRS seismic survey and sub bottom profiling surveys.
- 397 locations geotechnical survey (CPT and VC) along the cable routes.
- 43 km of WROV based depth of burial survey of existing cables.
- Laboratory testing of vibrocore samples.
- Debris survey and removal of debris.
- Environmental survey including 103 drop down video transects.
- Reporting and data processing.

During the offshore operations 6 vessels were deployed and used in various modes to perform the required survey activities. A total of 1.370 vessel days were used to complete the project.



A Vessel Geo Ranger operating offshore **B** Example debris survey MBES and SSS by vessel Geo Ranger **C** UXO survey equipment **D** Launching of the CPT unit

**WE LISTEN
THEN DELIVER**

N-Sea Wilgenbos 2 (4th floor), 3311 JX Dordrecht, The Netherlands **E** info@n-sea.com **E** sales@n-sea.com **T** +31 (0)111 456 000 **www.n-sea.com**