



**DIVING AND  
ROV SERVICE:  
INTEGRAL  
TO YOUR  
SUCCESS**

**N-SEA PEOPLE  
INSHORE AND  
NEARSHORE  
SERVICES**

---

**DELIVERING SUBSEA**  
PEOPLE / VESSELS / EQUIPMENT

# N-SEA: INSHORE AND NEARSHORE SERVICES

N-Sea diving operates the inshore and nearshore market segment with diving, survey and ROV services, to assist subsea projects with any underwater specialty: from inspection, maintenance and repair projects to installation, civil construction and salvage work scopes.



We support clients in the renewable energy and dredging industries, ports, harbours and various other civil or industrial projects nearshore.

N-Sea diving delivers safe, effective and cost-efficient solutions for:

- Port development and maintenance (incl. Deep water quays)
- Subsea structures
- Civil constructions
- Renewable energy projects (wind/tidal turbines)

N-Sea diving has the expertise and experience to handle civil engineering projects. We safely manage underwater projects with our integrated diving, survey, ROV (Remotely Operated Vehicle) and data report services.

Besides the delivery of a clear and concise report of the encoded data that has been collected nearshore, we can provide information during the commercial and operational phases of a project.

---

## APPLIED UNDERWATER TECHNIQUES

- Wet welding, burning and cutting
  - Injection techniques
  - Underwater concreting
  - Cleaning services and removal of sediment
  - Habitat and hyperbaric caisson works (overpressure works)
  - Diving, ROV, video and sonar inspections
  - Non-Destructive Testing (NDT)
  - Maintenance and repair execution (e.g. construction work and wet welding concrete/metal)
  - Corrosion monitoring and installation of cathodic protection
  - In-house data processing and reporting services
-

# N-SEA: INSHORE AND NEARSHORE SERVICES

## INSPECTION, REPAIR AND MAINTENANCE

For nearshore IRM projects we perform inspections by divers or ROV and provide report services to assist our clients in developing the optimal repair methodology to maintain their assets at peak performance.

## INSTALLATION SUPPORT

N-Sea safely manages installation and construction support to subsea assets and in subsea civil engineering and overpressure projects.

We provide safe and innovative engineered solutions for buildings with foundations below water level.

## CABLE INSTALLATION

With the complementary services of N-Sea's survey division, we deliver pre-lay/construction surveys, excavation services, and monitoring during operations.

## TUNNELING

N-Sea delivers diving support for aqueduct or tunnel (bored or immersed) projects.

We have the expertise and resources to provide engineering, project preparation and safe project execution. We can supply qualified personnel, high tech equipment and diving support vessels to assist in tunneling projects.

## CATHODIC PROTECTION

To prevent ships and structures from corrosion, N-Sea diving provides cathodic protection measurements and the installation of anodes for different projects. Through corrosion monitoring and dive inspections we can provide a visual inspection report (GVI or CVI).

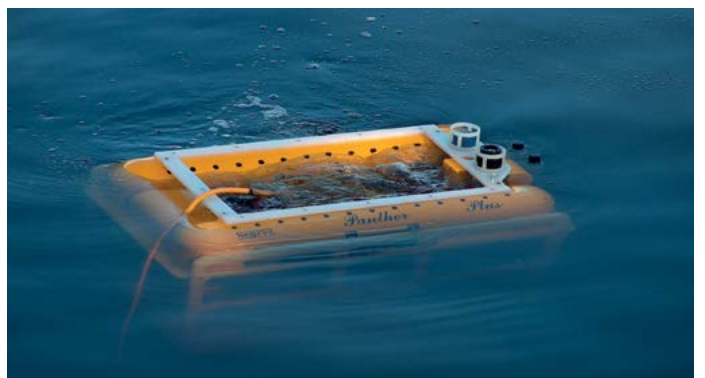
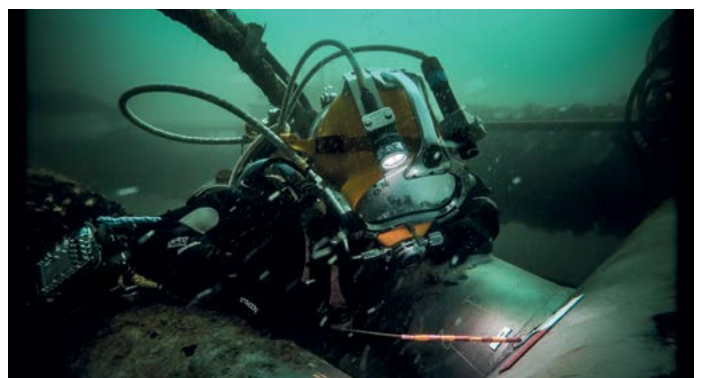
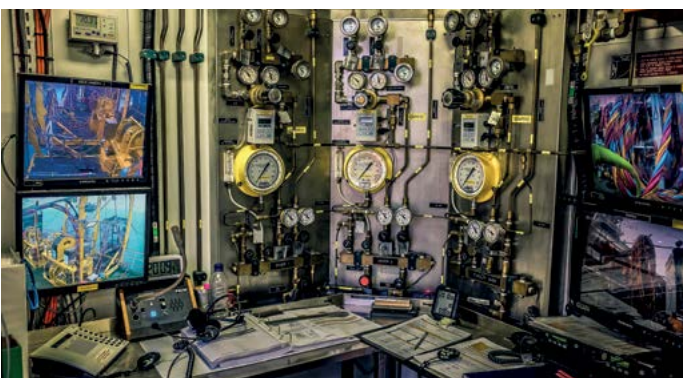
- Wall thickness measurements, corrosion monitoring and cleaning
- Preparing anode installation plans
- Installing anodes by underwater welding
- Completion of the anodes installation by cathodic measurements
- A general or close visual inspection report

## SALVAGE

N-Sea diving offers turnkey salvage services by delivering various environmentally safe subsea intervention activities:

- Locating, inspecting and removal of objects and wrecks
- Oil removal by means of a hot-tap system
- Sludge removal
- Water and soil samples
- Repair of oil leaks

**N-Sea diving operate a 24/7 service. Ensuring our clients have our full support at all times.**



# N-SEA: INSHORE AND NEARSHORE SERVICES



## IN-WATER-SURVEYS

N-Sea diving has been accredited by classification societies (Lloyds, DNV, ABS) to perform in-water surveys of all types of vessels and objects.

## UXO MANAGEMENT

By combining geophysical survey activities with intervention activities, UXO detection and removal competencies within one company, we can provide a powerful solution for customers faced with issues relating to the clearing of cable corridors for future windfarms and subsea installations.

### Survey, Identification and Removal of UXO objects

We investigate and map potential targets with hi-res sonar, ROV or divers, and remove any confirmed UXO objects through an Explosive Ordnance Disposal (EOD) process. These operations are carried out offshore and near shore. We have the expertise and the experience to perform UXO management according to Dutch, German and British Law.

UXO management is defined as three distinct activities:

- Geophysical survey to identify non-UXO and potential UXO objects
- Visual inspection to positively identify non-UXO or actual UXO objects
- Disposal as required of both non-UXO and actual UXO objects

## TRENCHING AND EXCAVATION SUPPORT

We deliver trenching and excavation support for cable or pipe lay operations and for deepening ports and fairways. There are different methods currently used to create a trench. The techniques we use are dependent on the seabed constituents, depth and the length of the trench.

- Hidrostal pump (a centrifugal system to suck and remove bottom sediment).
- Airlift systems used from 8 metres of water depth.
- Mass Flow Excavation tools (MFE). The Twin-Prop and Quad-Prop are constructed to be non-intrusive, ensuring safe and controllable operations. Both systems can be used for trenching and deburial of various types of seabed including; debris, rocks and sand. Both systems are used in deep water.

## RESOURCES

The significant investment of in-house technology, equipment and fleet means we can deliver flexible subsea solutions for the most technically challenging worksopes.

N-Sea deploys DSV vessels and daughtercrafts with the availability of workclass and inspection class ROVs e.g. Panther plus and Falcon - to deliver a range of nearshore subsea services and renewables operations with minimal impact on production.



**DELIVERING SUBSEA**  
PEOPLE / VESSELS / EQUIPMENT

[WWW.N-SEA.COM](http://WWW.N-SEA.COM)

### Head Office

Industrieweg 29  
4301 RS Zierikzee  
P.O. Box 200,  
4300 AE Zierikzee  
The Netherlands

T: +31 (0)111 456000

### UK Office

6<sup>th</sup> Floor, Union Point  
Blaikies Quay  
Aberdeen  
AB11 5PW  
United Kingdom

T: +44 (0)1224 459901

### Dubai Office

Burlington Tower  
Office #2610  
Business Bay  
Dubai, UAE  
PO Box 450489

T: +971 (0)4 4224453

*The specifications are believed to be correct and subject to revision without prior notice.  
Revised January 2020.*

E: [info@n-sea.com](mailto:info@n-sea.com)